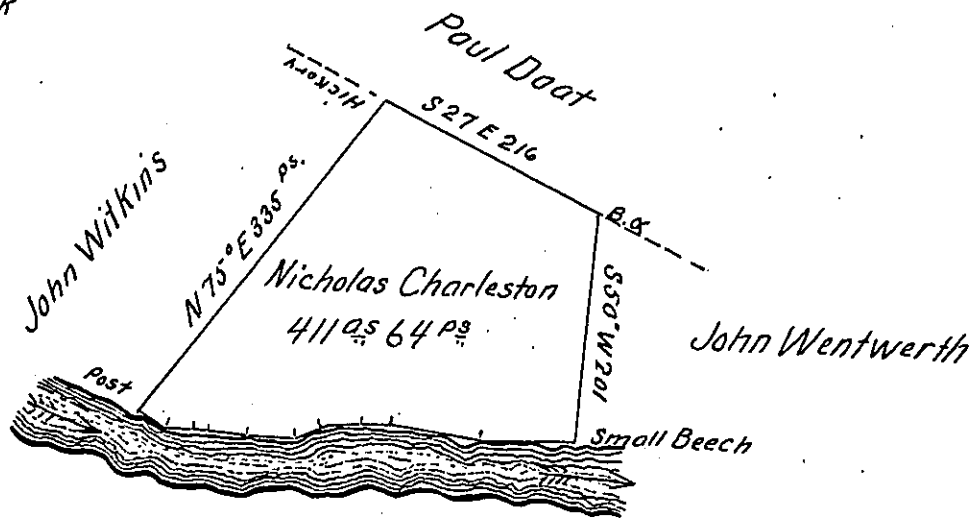


Courses and distances up French Creek  
beginning at a Small Beech

N 32 W 3.4  
 N 42 1/2 W 74.  
 N 47 3/4 W 80  
 N 48 1/2 W 20  
 N 57 1/2 W 22.1  
 N 69° W 10.3  
 N 61° W 37.4  
 N 51 3/4 W 29.  
 N 58 1/4 W 23.8  
 N 40° W 21.  
 N 52 1/2 W 20.  
 N 27° W 20.2  
367.2



In pursuance of a Warrant for 400 Acres of land dated the 5<sup>th</sup> day of September 1801. was surveyed the 7<sup>th</sup> day of July 1802 for Nicholas Charleston the above described Tract of land containing 411<sup>as</sup> Acres 64 perches and allowance of six per cent for Roads &c. Situate on the East side of French Creek in Mead Township Crawford County.

To Samuel Cochran Esquire  
Surveyor General

William M<sup>c</sup>Arthur D.S.

IN TESTIMONY that the above is a copy of the original remaining on file in the Department of Internal Affairs of Pennsylvania, made conformably to an Act of Assembly approved the 16th day of February, 1833, I have hereunto set my Hand and caused the Seal of said Department to be affixed at Harrisburg, this twenty sixth day of April 1904.

*George P. Brown*  
Secretary of Internal Affairs.